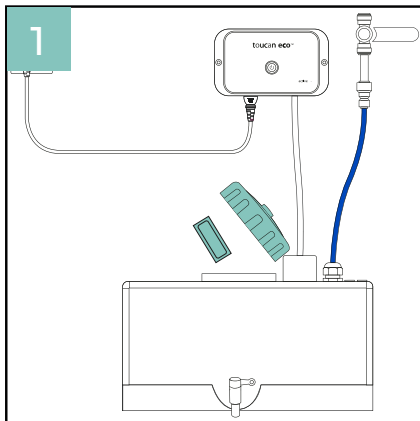
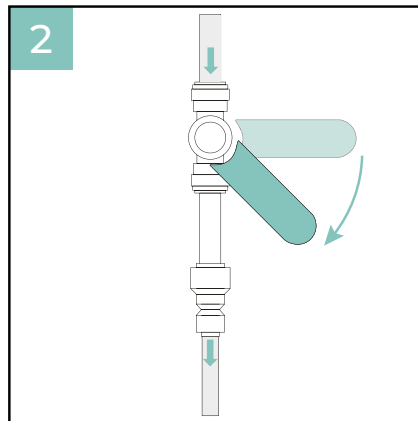


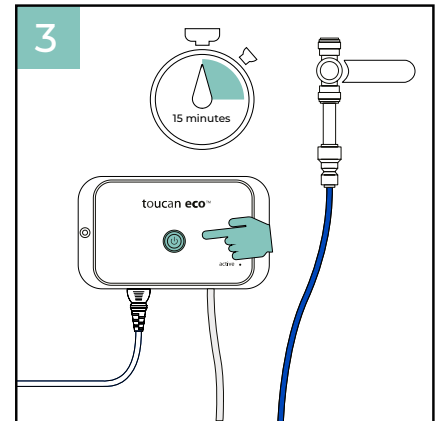
Toucan Eco Active Operation Guide



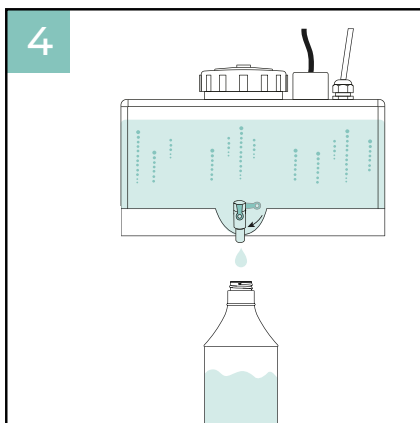
Unscrew the tank's black lid and add one soluble salt sachet. There shouldn't be any water in the tank at this stage.



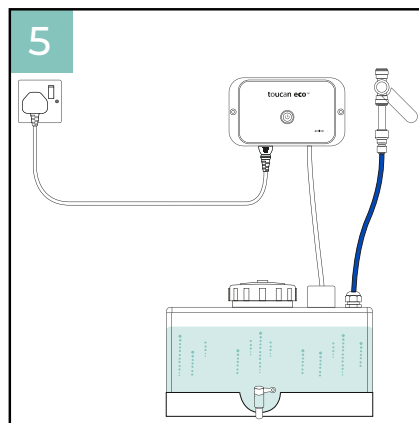
Open the lever valve to fill the tank up to the 10 litre mark. If the unit isn't plumbed in simply fill by hand.



Switch on the activator unit - the unit's light will turn green. Press the button, the light turns blue and the electrochemical activation begins. This will take 15 minutes, during which time you will see bubbles around the cell and a faint smell of chlorine once activated.



When ready, the device will beep, light turns green and you have 10 litres at 100ppm in the tank. Use the tap to dispense the solution into bottles or buckets.



To make more solution, simply empty the tank and repeat the process again.

General maintenance

To pro-long the life of your Toucan Eco device and remove any build-up of salt or limescale, we recommend giving the holding tank a thorough clean once or twice a year to remove any build up of salt or limescale.

To do this, switch off the system at the socket, fully drain the tank and fill with half white vinegar and half water. Leave for 30 minutes, drain and thoroughly flush the tank with cold water three times. Then wipe the inside of the tank with a microfibre cloth. We also recommend a more frequent flush with just cold water once a month and a clean to remove any residue salt from the outside of the equipment.